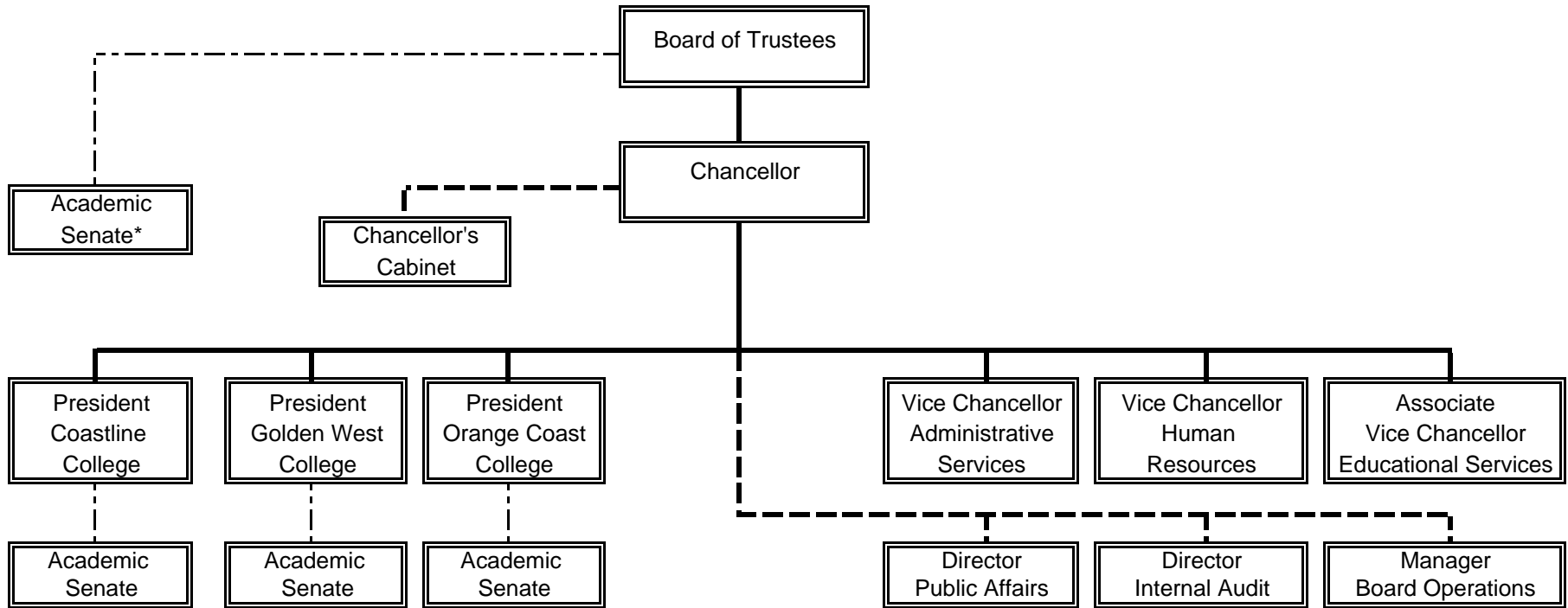


Attachment D:

**COAST COMMUNITY COLLEGE DISTRICT
Functional Organization**



A solid line indicates an administrative decision-making line of authority and accountability. A dashed line represents governance and/or an operational line for consultation, advice, and/or recommendation. The primary CCCD participatory governance entity is the Chancellor's Cabinet.

Chancellor's Cabinet: Participatory Governance

- Academic Senates
- District Administration
- College Presidents
- Coast District Management Association
- Coast Federation of Educators
- Coast Federation of Classified Employees
- Coast Community College Association

* For advice on policy development involving "rely primarily" on academic and professional matters.